

STANDARD ARRIVAL  
CHART - INSTRUMENT  
(STAR) - ICAO

TRANSITION ALT  
10000 FT

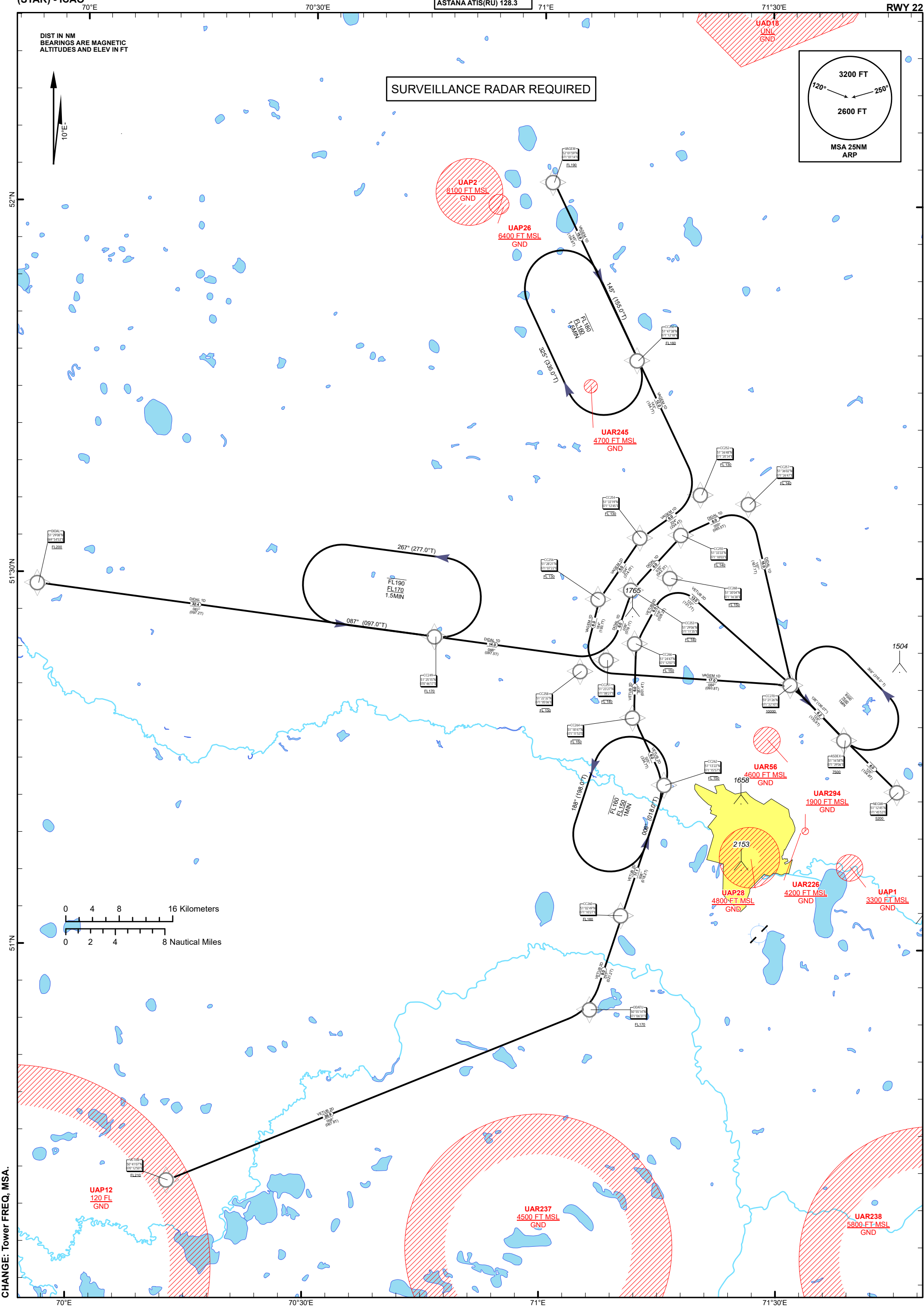
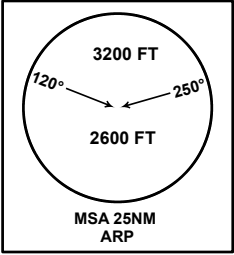
ASTANA TOWER 135.5  
ASTANA APPROACH 124.6  
ASTANA RADAR 120.7  
ASTANA ATIS(EN) 129.5  
ASTANA ATIS(RU) 128.3

(RNAV 1 STAR BASED ON GNSS)  
DIDAL 1D, VAGEM 1D, VETUB 2D

ASTANA  
NURSULTAN NAZARBAYEV  
INTERNATIONAL AIRPORT  
RWY 22

DIST IN NM  
BEARINGS ARE MAGNETIC  
ALTITUDES AND ELEV IN FT

SURVEILLANCE RADAR REQUIRED



CHANGE: Tower FREQ, MSA.

TABULAR DESCRIPTION

DIDAL 1D											
Serial Number	Path Descriptor	Waypoint Identifier	Fly - over	Course °M(°T)	Magnetic Variation(°)	Distance NM	Turn Direction	Altitude FT	Speed KT	VPA (°)	Navigation Specification
10	IF	DIDAL	-		10	0	-	+FL200	-315	-	RNAV1
20	TF	CC249	-	87(97.2)	10	32.4	-	+FL170	-280	-	RNAV1
30	TF	CC251	-	88(97.5)	10	14	-	@FL140	-280	-	RNAV1
40	TF	CC253	-	9(19.1)	10	6	L	@FL140	-280	-	RNAV1
50	TF	CC255	-	32(42.3)	10	6	R	@FL140	-280	-	RNAV1
60	TF	CC257	-	55(65.5)	10	6	R	@FL140	-280	-	RNAV1
70	TF	CC270	-	157(167.1)	10	15	R	+10000	-250	-	RNAV1
80	TF	ASDEX	-	126(135.9)	10	6.2	L	+7500	-250	-	RNAV1
90	TF	NEGMI	-	125(134.8)	10	6	L	+5200	-230	-	RNAV1

WAYPOINT LIST

DIDAL 1D		
Waypoint Identifier	Coordinates	
DIDAL	512908.00N	0695453.00E
CC249	512514.52N	0704616.73E
CC251	512326.63N	0710827.01E
CC253	512906.41N	0711135.16E
CC255	513332.66N	0711802.51E
CC257	513602.33N	0712647.22E
CC270	512126.38N	0713210.34E
ASDEX	511658.39N	0713905.63E
NEGMI	511245.30N	0714552.60E

TABULAR DESCRIPTION

VAGEM 1D											
Serial Number	Path Descriptor	Waypoint Identifier	Fly - over	Course °M(°T)	Magnetic Variation(°)	Distance NM	Turn Direction	Altitude FT	Speed KT	VPA (°)	Navigation Specification
10	IF	VAGEM	-		10	0	-	+FL190	-315	-	RNAV1
20	TF	CC250	-	145(154.6)	10	15.9	-	+FL160	-280	-	RNAV1
30	TF	CC252	-	145(154.7)	10	12	-	@FL130	-280	-	RNAV1
40	TF	CC254	-	224(234.4)	10	6	R	@FL130	-280	-	RNAV1
50	TF	CC256	-	204(214)	10	6	L	@FL130	-280	-	RNAV1
60	TF	CC258	-	184(193.7)	10	6	L	@FL130	-280	-	RNAV1
70	TF	CC270	-	84(93.8)	10	17	L	+10000	-250	-	RNAV1
80	TF	ASDEX	-	126(135.9)	10	6.2	R	+7500	-250	-	RNAV1
90	TF	NEGMI	-	125(134.8)	10	6	L	+5200	-230	-	RNAV1

WAYPOINT LIST

VAGEM 1D		
Waypoint Identifier	Coordinates	
VAGEM	520159.00N	0710114.00E
CC250	514737.53N	0711218.47E
CC252	513647.82N	0712034.43E
CC254	513318.85N	0711244.78E
CC256	512820.94N	0710722.13E
CC258	512231.57N	0710506.20E
CC270	512126.38N	0713210.34E
ASDEX	511658.39N	0713905.63E
NEGMI	511245.30N	0714552.60E

TABULAR DESCRIPTION

VETUB 2D											
Serial Number	Path Descriptor	Waypoint Identifier	Fly - over	Course °M(°T)	Magnetic Variation(°)	Distance NM	Turn Direction	Altitude FT	Speed KT	VPA (°)	Navigation Specification
10	IF	VETUB	-		10	0	-	+FL210	-315	-	RNAV1
20	TF	ODATU	-	58(67.8)	10	35.9	-	+FL170	-280	-	RNAV1
30	TF	CC260	-	11(21.2)	10	9	L	+FL160	-280	-	RNAV1
40	TF	CC262	-	8(18.1)	10	11.1	-	@FL150	-280	-	RNAV1
50	TF	CC264	-	325(334.7)	10	6	L	@FL150	-280	-	RNAV1
60	TF	CC266	-	351(1.4)	10	6	R	@FL150	-280	-	RNAV1
70	TF	CC268	-	18(28.2)	10	6	R	@FL150	-280	-	RNAV1
80	TF	CC270	-	122(131.7)	10	13	R	+10000	-250	-	RNAV1
90	TF	ASDEX	-	126(135.9)	10	6.2	R	+7500	-250	-	RNAV1
100	TF	NEGMI	-	125(134.8)	10	6	L	+5200	-230	-	RNAV1

WAYPOINT LIST

VETUB 2D		
Waypoint Identifier	Coordinates	
VETUB	504107.00N	0701250.00E
ODATU	505426.70N	0710518.10E
CC260	510249.33N	0711027.06E
CC262	511321.91N	0711557.33E
CC264	511847.14N	0711152.91E
CC266	512446.59N	0711207.11E
CC268	513003.67N	0711638.49E
CC270	512126.38N	0713210.34E
ASDEX	511658.39N	0713905.63E
NEGMI	511245.30N	0714552.60E

CHANGE: Editorial.